

# Q1aPreview 1.0.0.3

## User Manual

22-May-06

### Introduction

Q1aPreview is a Windows application that you can use to simultaneously play the major sounds of a Q1a firmware module.

For firmware used with Diesel models, you can hear the pump, diesel motor, horn and bell. You can rev the motor up to notch 8 and down to notch 1, turn the bell on and off, and blow the horn.

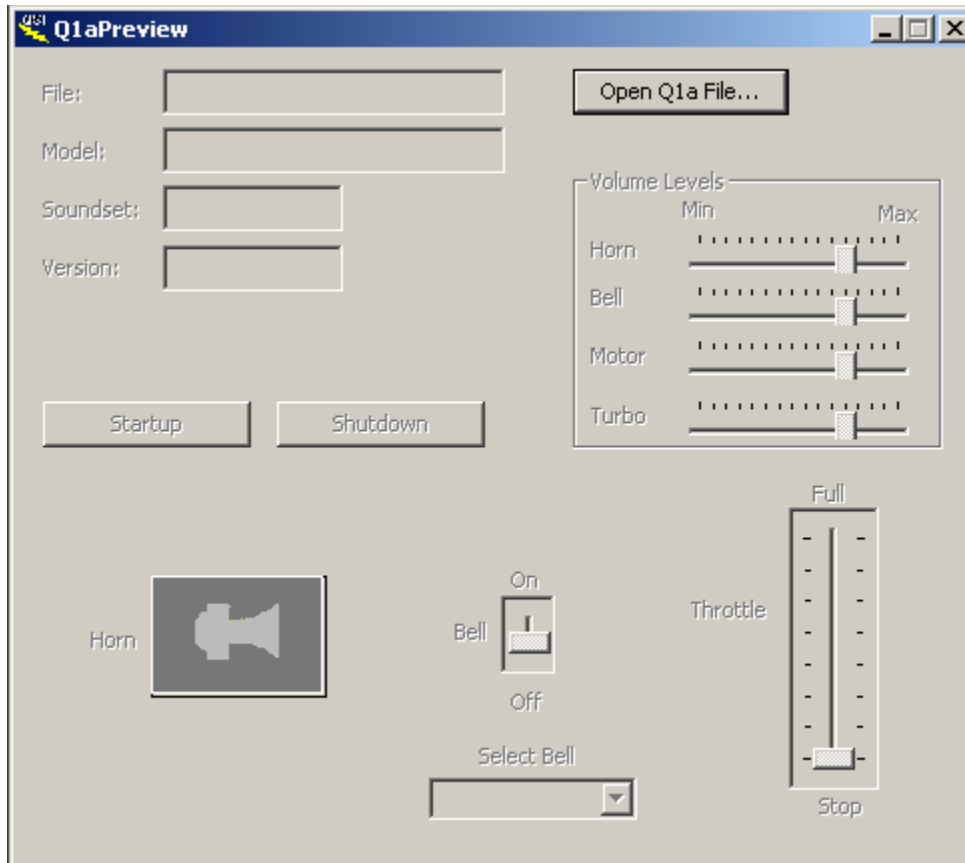
For firmware used with Steam models, you can hear the pump, chuff, whistle and bell. You can rev the throttle up and down to increase and decrease the chuff rate, turn the bell on and off, and blow the whistle.

Q1aPreview works only with Q1a files.

Each Q1a file contains an embedded binary image of a firmware module. Using the Windows application Q1aUpgrade and the Quantum Programmer, this binary image can be downloaded to a QSI locomotive that currently contains version 7 or later firmware.

Each Q1a file also contains additional information that allows Q1aPreview to play the actual sound records embedded in the binary image. What you hear are the actual records that your locomotive will play if you download that Q1a file to your locomotive. Q1aPreview attempts to mimic the way your locomotive plays these records. Some differences still occur. Most noticeable is the difference in base response due to the larger speakers of your PC audio system.

## Starting Screen (Screen #1)



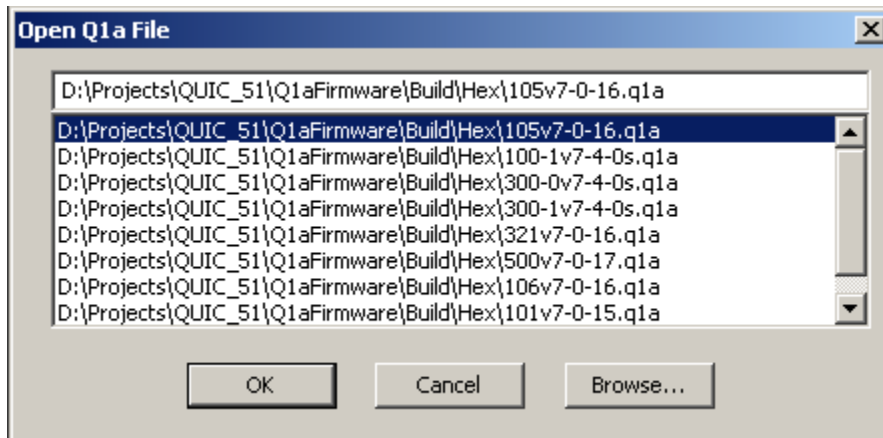
When you start Q1aPreview, all the information boxes are empty. All buttons and controls are disabled except for the “Open Q1a File...” button.

Click this button to open the “Open Q1a File” dialog, where you can select a Q1a file.

You can also drag and drop a Q1a file onto the Q1aPreview screen to open that file.

When a file is opened, the application displays Screen #2.

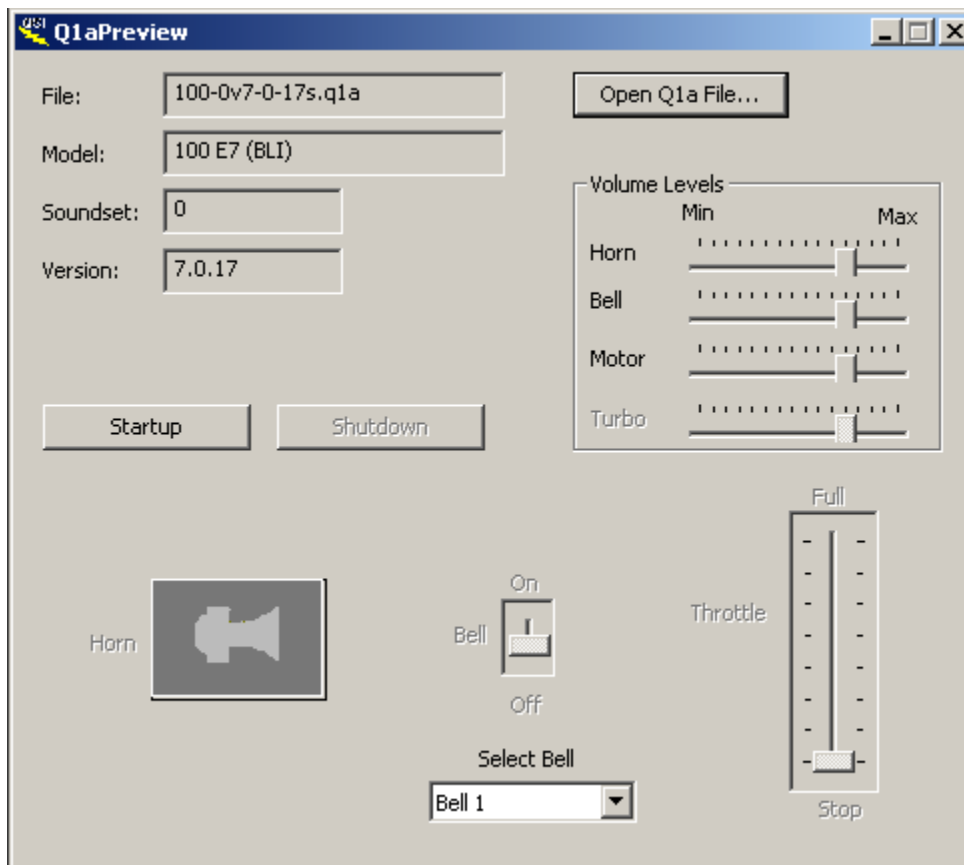
## Open Q1a File Dialog



Select on a recently used Q1a file or click on “Browse...” to select a different Q1a file.

Click on OK to open the selected file.

## Screen with Opened Q1a File (Screen #2)



The name of the opened file is displayed under “File”.

The firmware’s model number and model name is displayed under “Model”.

The firmware’s soundset number is displayed under “Soundset”.

The firmware’s major version number, minor version number, and build number are displayed under “Version”.

If the firmware supports more than 1 prototypical bell, the “Select Bell” combo box is enabled where you can select among the supported bells.

The “Horn” button, “Bell” on/off switch, and the “Throttle” are disabled.

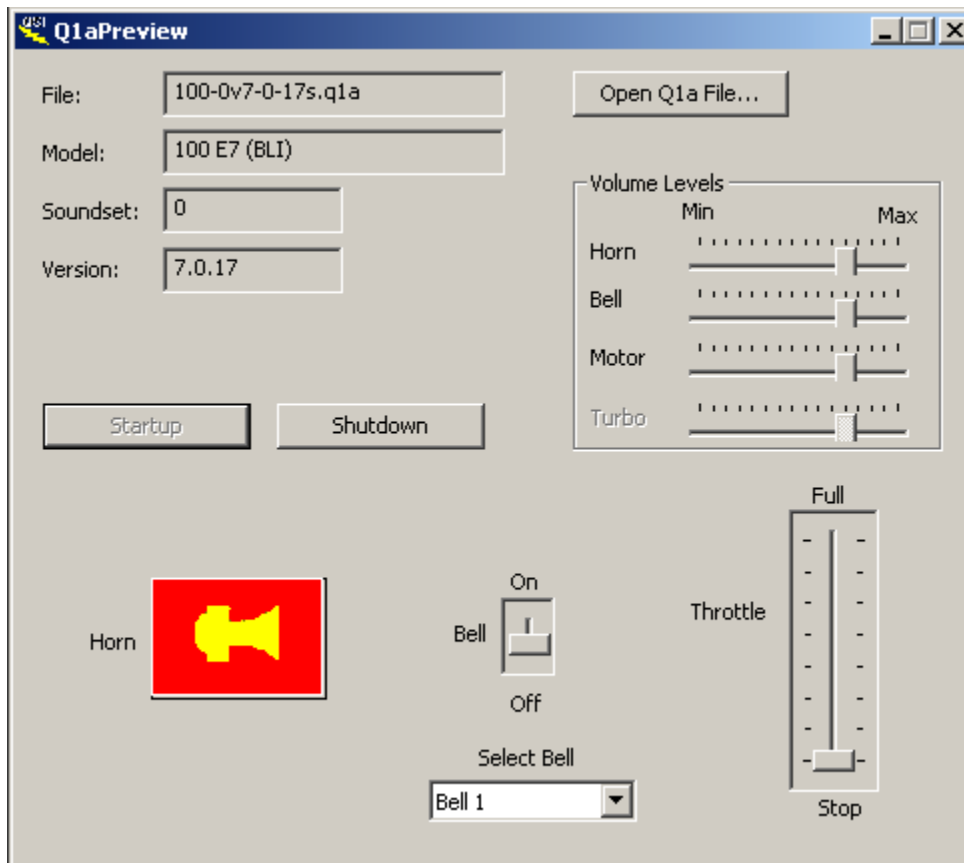
If the Qa1 file is for a Steam locomotive, a “Whistle” button instead of a “Horn” button is displayed.

There are four Volume Levels you can adjust: Horn, Bell, Motor, and Turbo. If the model does not support Turbo sounds this Volume Level is disabled. You can set the volume levels before clicking Startup or after clicking Startup when the sounds are playing.

If the model is a Steam engine, the four Volume Levels are Whistle, Bell, Chuff, and Chuff2. If the model is of an articulated engine, the Chuff2 volume level is enabled. Otherwise it is diasabled.

The “Startup” button is enabled. Click this button to begin playing sounds. The application will display Screen #3.

## Screen when Sounds are Playing (Screen #3)



The locomotive's pump plays, along with background hiss. If the locomotive is a Diesel, the Diesel motor starts up and plays at notch 1.

The "Shutdown" button, "Horn" or "Whistle" button, "Bell" on/off switch, and the "Throttle" are enabled.

To play the horn or whistle, press the "Horn" or "Whistle" button. The horn or whistle plays as long as the button is held down. To play a horn or whistle hoot, tap the button.

To play the bell, move the "Bell" switch to the "On" position. The bell plays until you move the switch to the "Off" position. If the "Select Bell" combo box is enabled, you can select a different bell even while the bell is playing. The different bell will begin playing within one second.

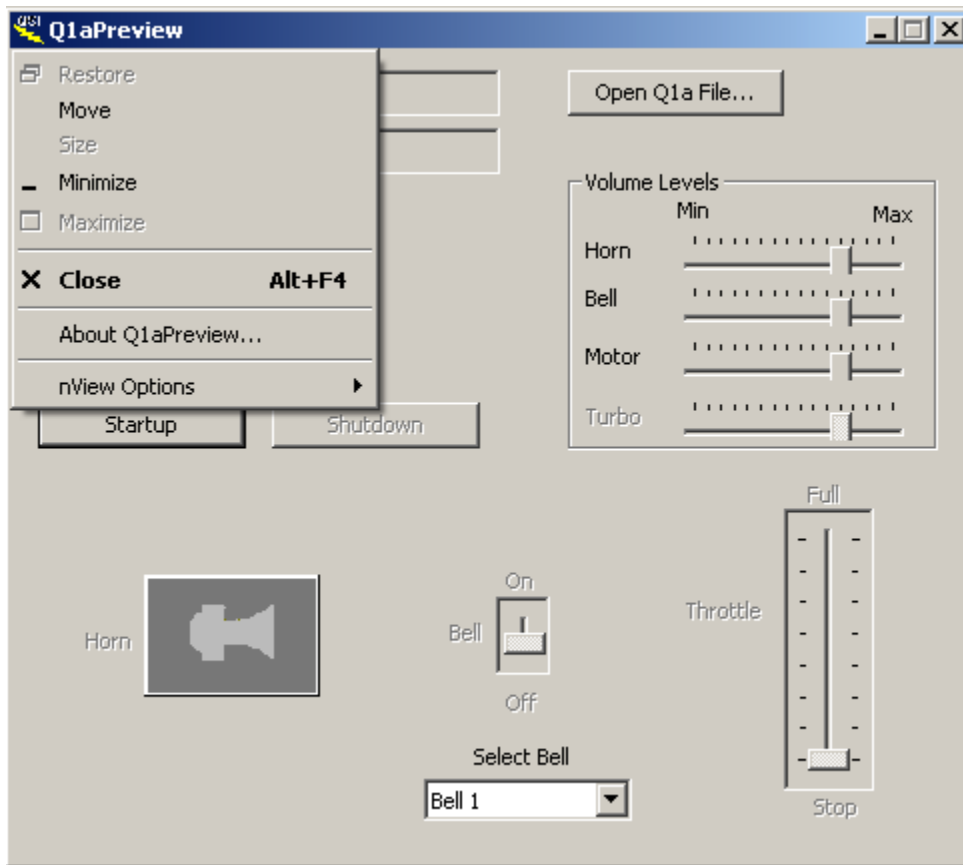
To rev the Diesel motor, move the throttle to a higher notch. If the Qa1 file is for a Steam locomotive, moving the throttle towards "Full" causes chuff sounds to play. The chuff rate increases the more you increase the throttle.

You can adjust the four Volume Levels while the sounds are playing. You cannot change the Horn/Whistle Volume Level while pressing the Horn button.

To stop playing sounds, click the "Shutdown" button. The application will return to Screen #2.

If you open a different Q1a file while sounds are playing, the sounds will stop as if you had clicked on "Shutdown".

# System Menu



Click on the QSI icon at the upper left corner to view the system menu.

Click on "About Q1aPreview..." to open the "About Q1aPreview" dialog.

## About Q1aPreview Dialog



This dialog displays information about the Q1aPreview application, such as its version number.