



Quantum Programmer Installation Guide

Version 1.0.1
03-May-07



Package Contents

Check your package contents to make sure you have received the following items.

Quantum Programmer



12V DC 300MA Power Adapter



Using a power supply with a different voltage rating may damage this product and void its warranty.



Using a power supply other than the one supplied may cause download failures.



USB Cable

CD-Rom



If any of the above items are missing, please contact your dealer!

Product Description

Connectors:

Back end view showing Power and USB Connectors



Front end view showing Status LEDs and Track Connector



LED Indicators:

Green LED – Power / Activity

ON – The Quantum programmer is powered and ready for operation.

Blinking, Slowly – The Quantum Programmer is programming the locomotive on the program track.

Blinking Rapidly – The Quantum Programmer detected a programming error.

Red LED – Program Track Powered


ON – The Quantum Programmer is applying power to the program track. In DCC Service Mode, the red LED may go on and off repeatedly during a complex programming operation as power is applied to the track only long enough to complete each portion of the operation.

Blinking Rapidly – The Quantum Programmer detected an overload or short on the program track.

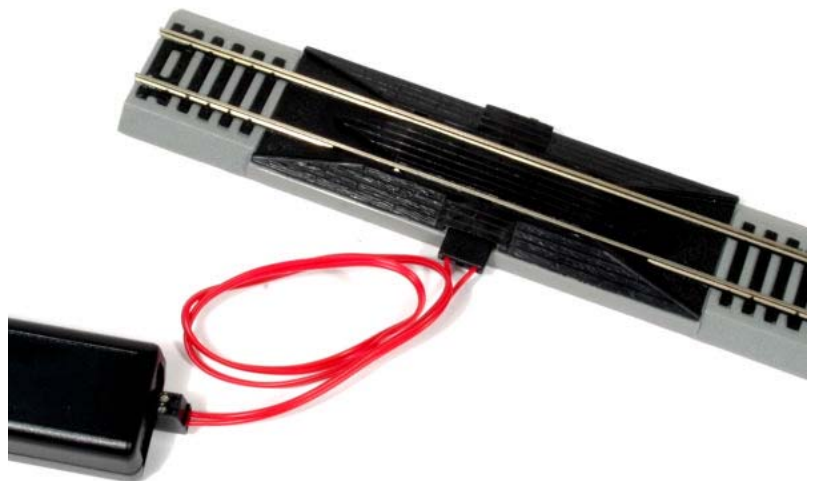
Installation

Connect to the Program Track

Connect the Track Connector to an isolated piece of track to be used as a program track. This track should not be connected to any other track on your layout.

 **The program track must not be connected to any other power source or the main track on your layout.**

 **Do not place a locomotive on**



the track at this time.

Set up your Quantum Programmer for use with Windows XP or Vista

Directions for Installing Quantum Programmer USB Drivers

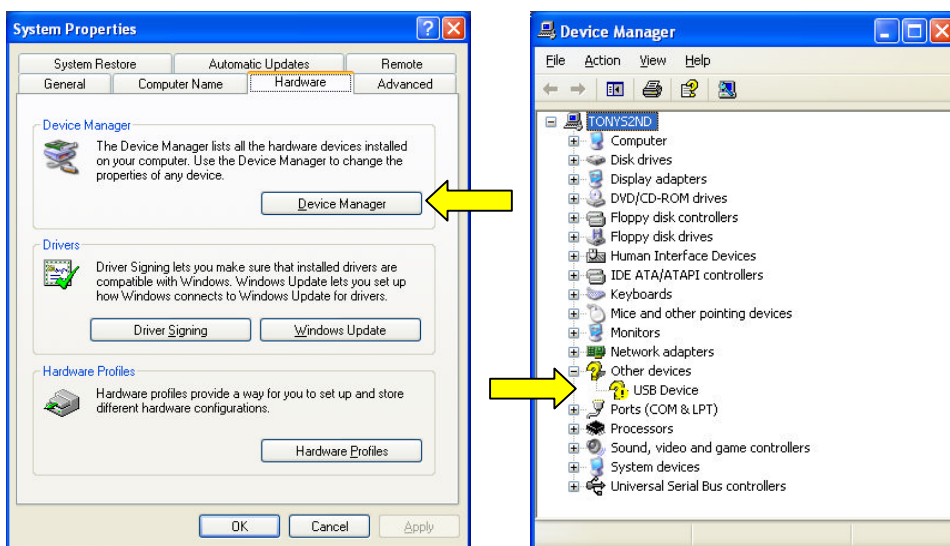


DO NOT CONNECT the Quantum Programmer to your computer until you have placed the driver files in a directory on your hard drive described below. Also See

- 1) Make a directory named SiLabs in a convenient spot on your hard drive.
- 2) Download the zipped (*.zip) USB driver file or Insert the CD into your CD Drive.
- 3) Using WINZIP, extract the zipped files to the SiLabs directory that you just created.
- 4) Connect power to the Quantum Programmer and connect the USB cable from the Quantum Programmer to a USB port on your computer
- 5) The “Found New Hardware” wizard should appear. Select “No, not this time” in response to “Can Windows connect to Windows Update to search for software?”

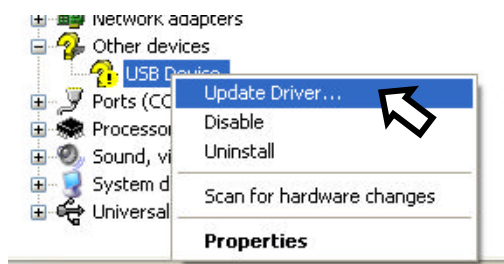
Connect the USB cable between your computer and the Quantum Programmer.

Connect the power adapter to the Quantum Programmer and plug it into an electric outlet. The Quantum Programmer will turn on, the green LED will illuminate, and the Add Hardware wizard will appear on your computer screen. If you do not see this screen see. Your PC does not recognize the device and it may not prompt you for “Welcome to the found new hardware wizard ” In that case go to (Control Panel, System, Hardware) the device manager for and look for “other devices”.

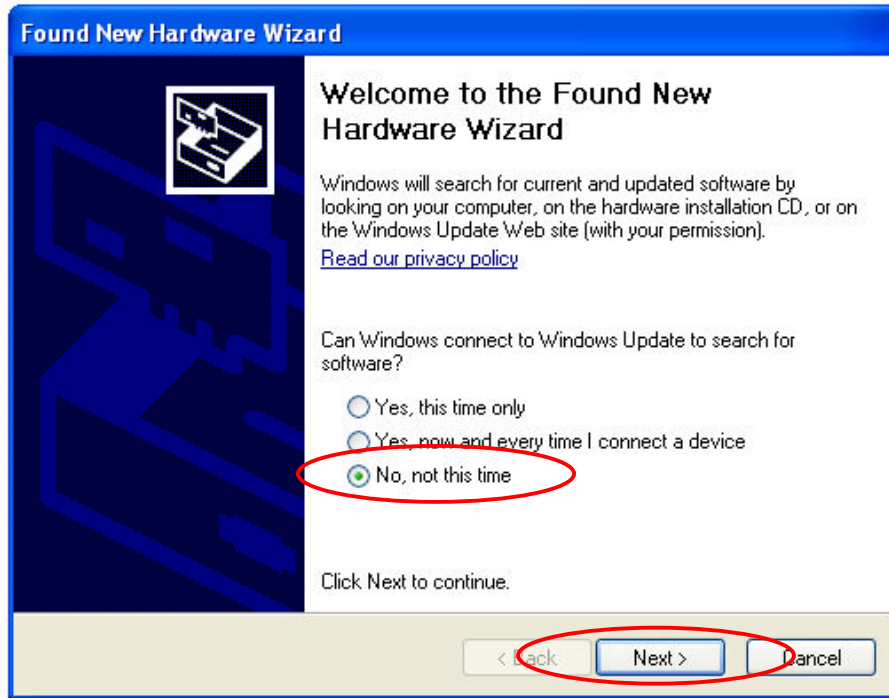


There should be an exclamation point on top of the question mark that is to the left of “Quantum Programmer or USB Device”

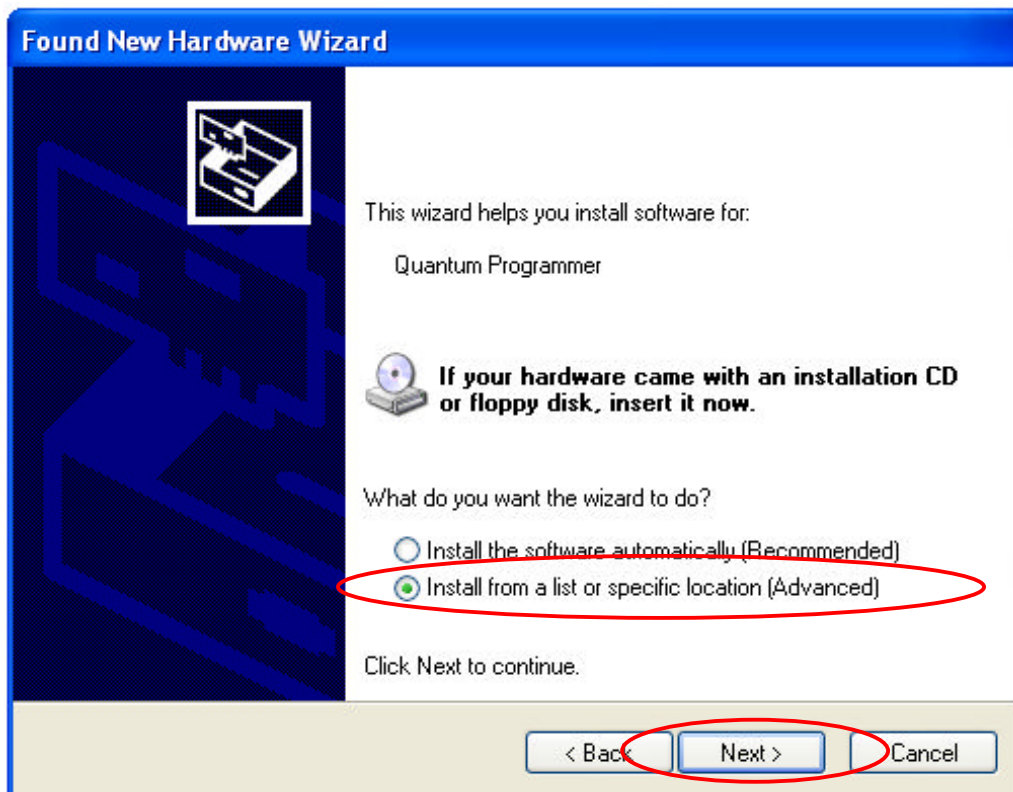
Use your right mouse button on top of “Quantum Programmer or USB Device” to display the sub menu. Select “Update Driver” with the left mouse button.



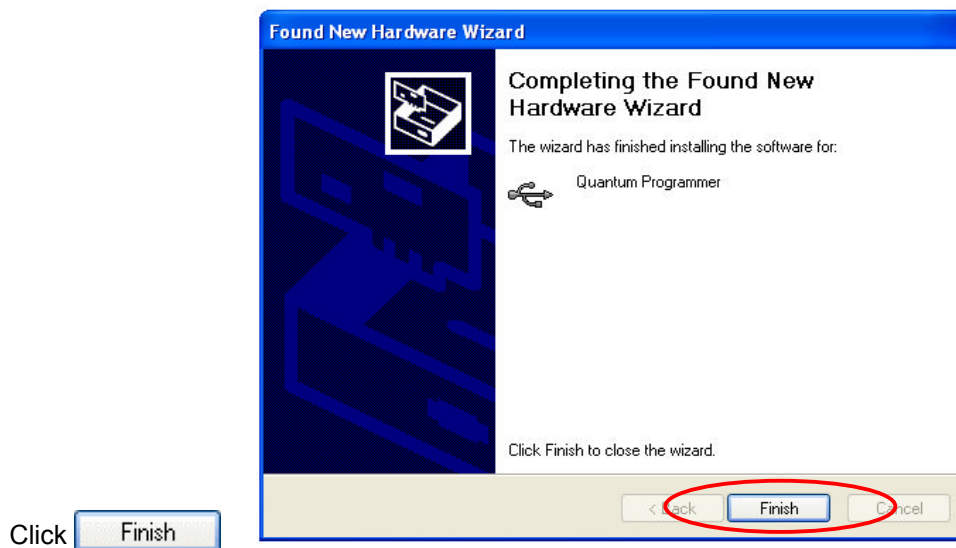
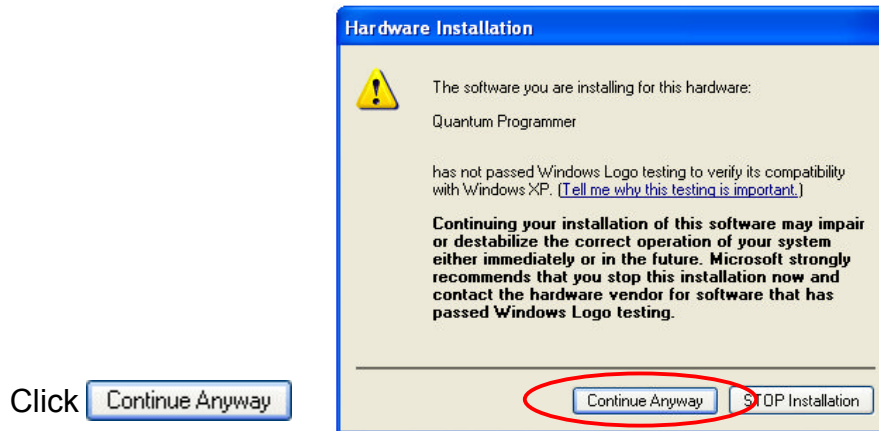
This will display the “Welcome to The Hardware Update Wizard” which requires the exact same steps as “Welcome to found New Hardware Wizard”



Select No, not this time and then click



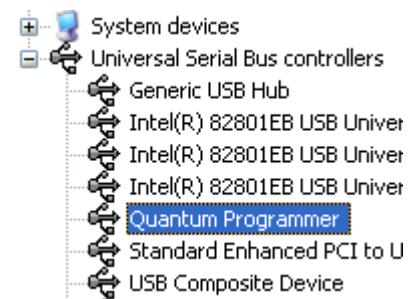
Click Install from a list or specific location (Advanced) and then click



The USB drivers for the Quantum Programmer are now installed on your computer.

If and only if your PC did not automatically start the "Welcome to the found new hardware wizard" and you had to add the drivers manually through the device manager. You should still have the device manager open on your desktop. You will now see that the Quantum Programmer is now recognized by Windows, and has it listed with your other USB devices. Close this window

Congratulations, your Quantum Programmer is now installed and is ready to program your Locos



Using your Quantum Programmer

The Quantum Programmer must be used together with a PC application to accomplish anything useful. There are currently two applications available for use with the Quantum Programmer.

Q1aUpgrade – use this application to upgrade your HO locomotive's firmware.

QuantumCVManager – use this application to program your locomotive's Configuration Variables.

See <http://qsisolutions.com/> for further information about these applications including user manuals and install files.